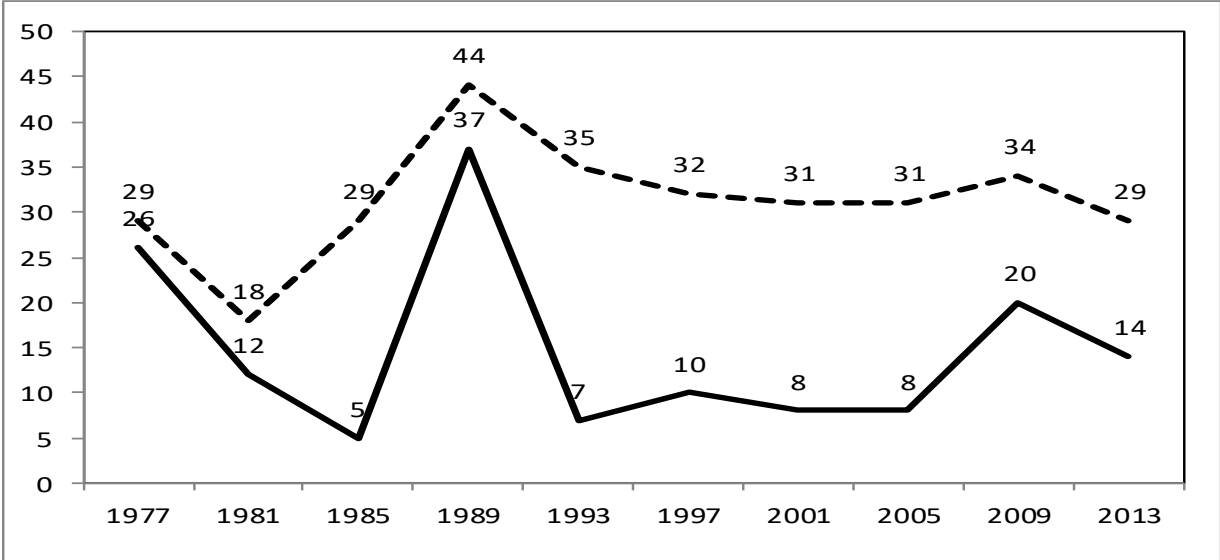


Climate Change – Figures

Figure 1. Environmental protection most important issue (solid line) and support for environmental protection (dotted line). Percent. 1977-2013*



*) Solid line: Percent mentioning environmental protection as most important issue (two issues allowed). Dotted line: Percent who disagree with the statement: "To secure economic growth we need to develop our industry even if doing so conflicts with environmental protection".

Figure 2a. Predicted probabilities for belonging to the environmentalist group rather than the climate-only group, for the range of values on the immigration index, all other values set at their mean. 2009 and 2013.

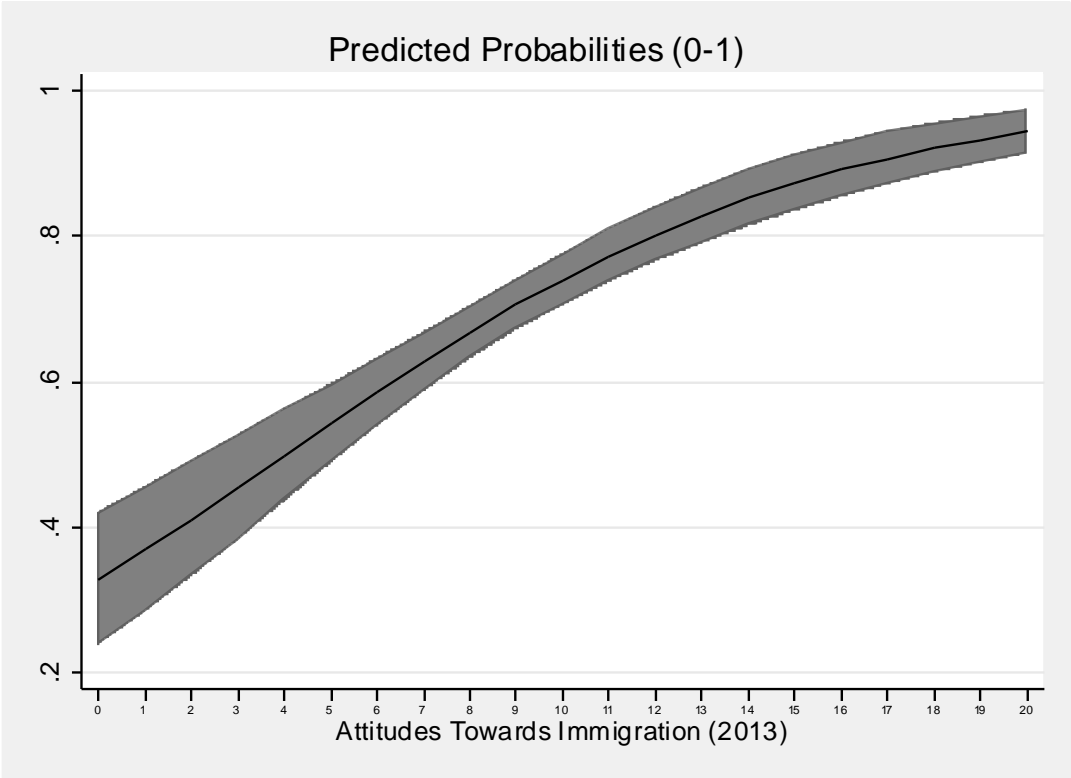
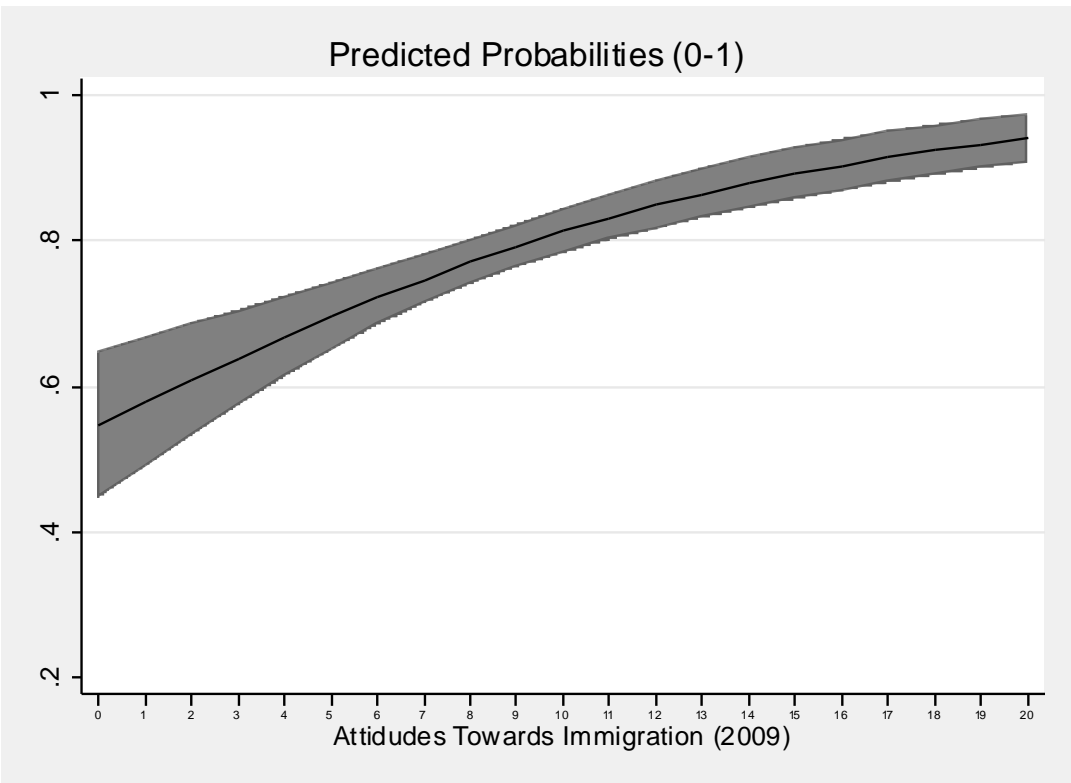


Figure 2b. Predicted probabilities for belonging to the environmentalist group rather than the climate-only group, for the range of values on the left-right index, all other values set at their mean. 2009.

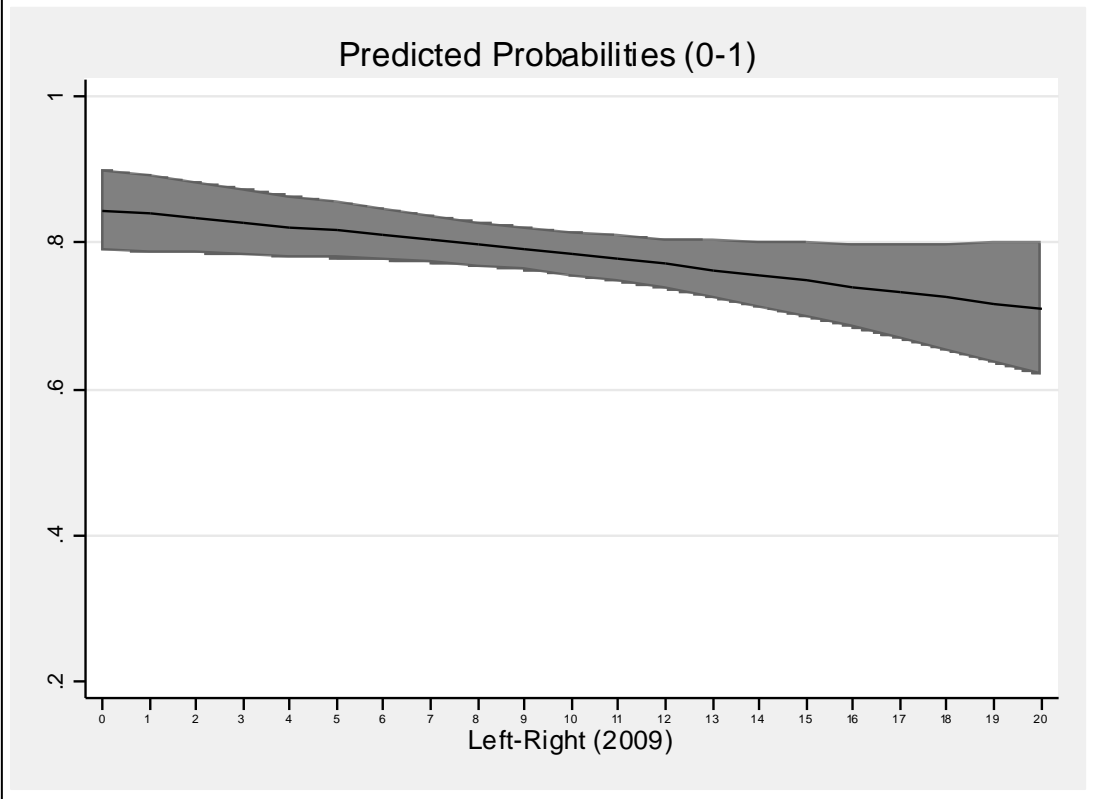


Figure 3. Position of political parties and environmental groups in a two-dimensional political space. Deviation from sample means on both dimensions by party voters and environmental and climate groups. Norway 2013.

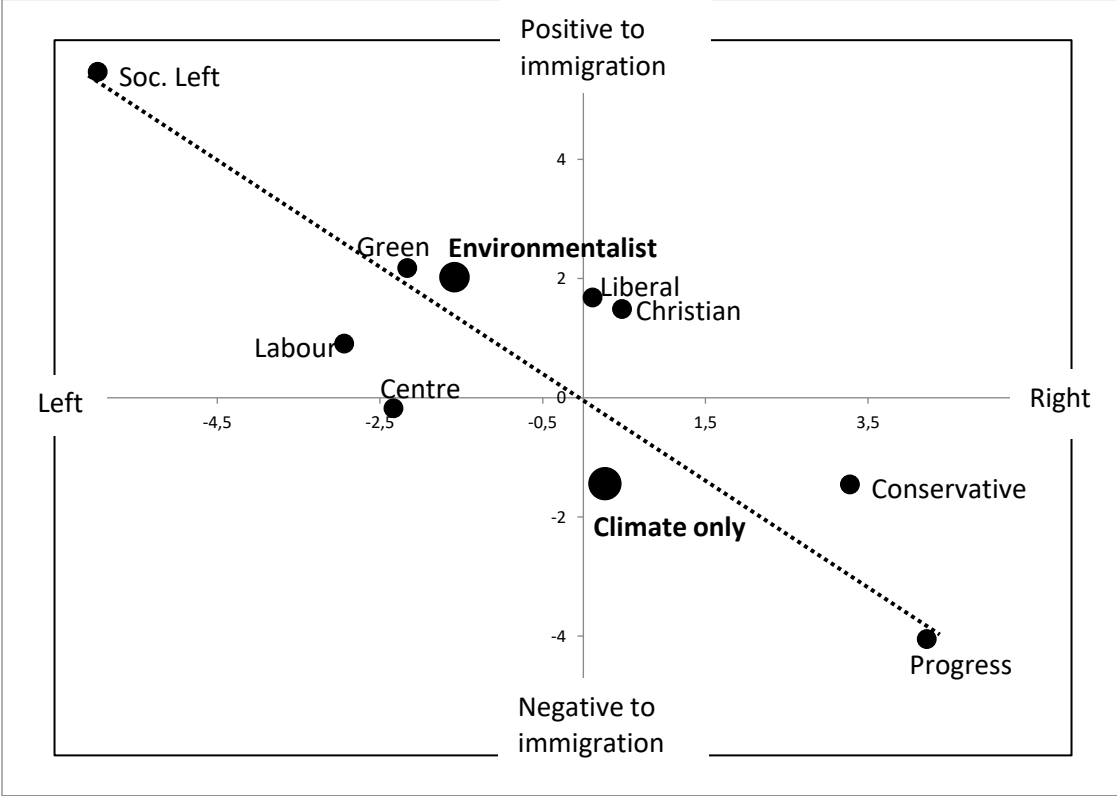


Figure in Appendix

Figure A.2. Position of political parties and environmental groups in a two-dimensional political space, using alternative classification of the environmentalist and climate-only group. Deviation from sample means on both dimensions by party voters and environmental and climate groups Norway 2013.

